

## JMG Cranes S.p.A.

Sales & Service Office

Via Bergamo, 142

26100 Cremona - Italy

t +39 0372 1786738

Production Plant

Via Zuccherificio 2

29010 Sarmato (PC) - Italy

t +39 0523 8486

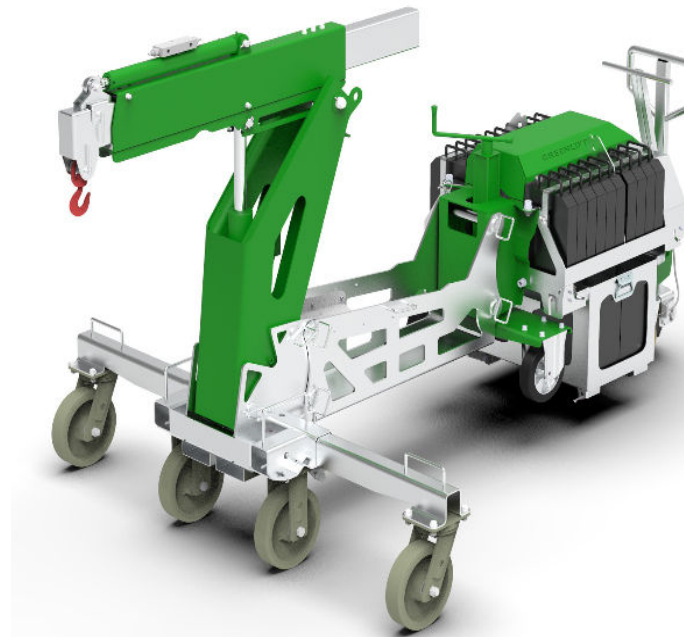
e [info@jmgcranes.com](mailto:info@jmgcranes.com)



Data subject to change without prior notice  
Edition 10/2022 © 2022 JMG Cranes S.p.A. All rights reserved  
Rev. 2 - 10/22



# Electric Pick & Carry Cranes

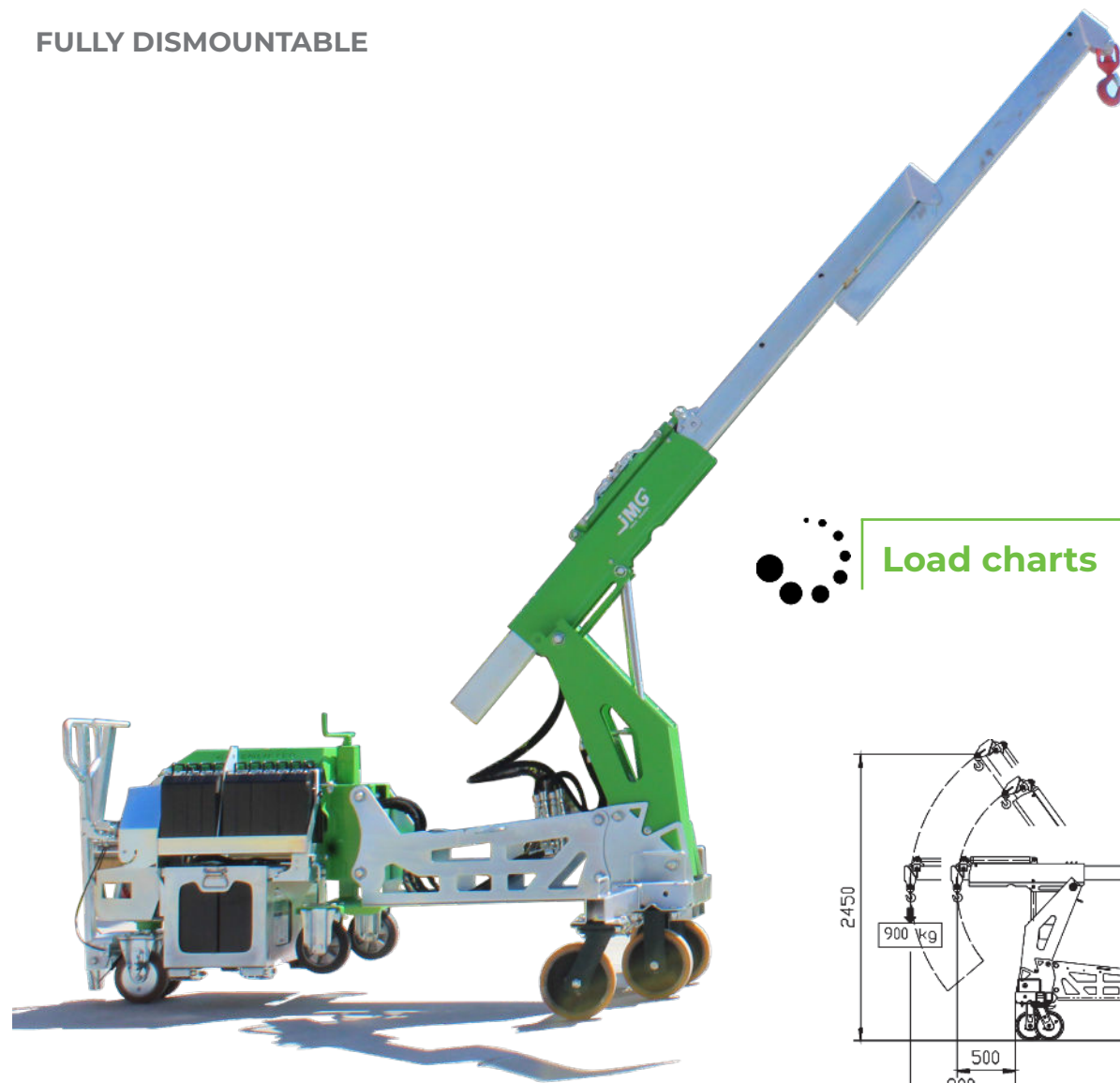


## GREENLIFTER (metric) Max Capacity 900 kg

[www.jmgcranes.com](http://www.jmgcranes.com)

**JMG**<sup>®</sup>  
move to solution

BOOM ELECTRO-HYDRAULIC CONTROLS BY BATTERY OPERATED RADIO-CONTROL  
MANUAL DRIVING AND STEERING  
FULLY DISMOUNTABLE



## Technical features

Max  
Capacity kg

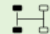







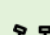


900

Dimensions  
mm

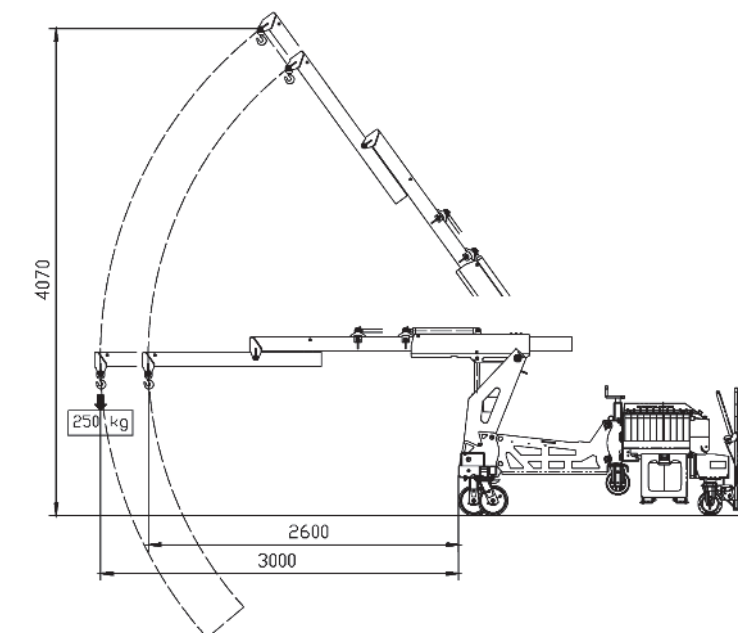
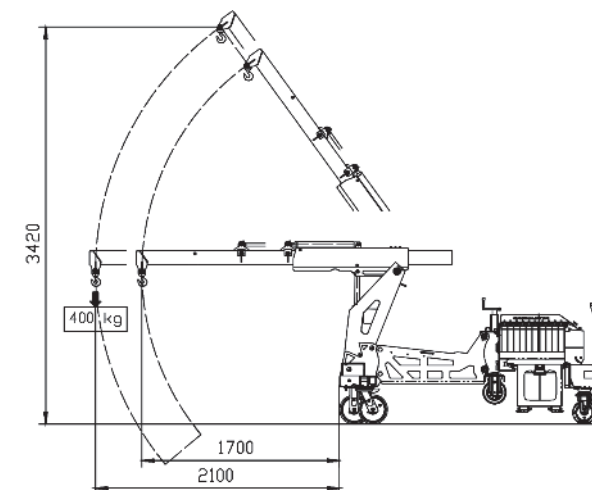
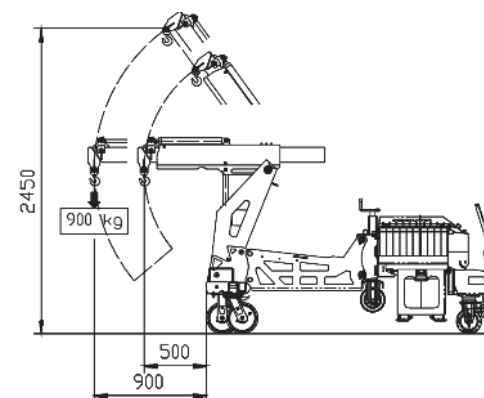


2340x1740x1570




	Manual driving		Boom electro-hydraulic controls by battery operated radio-control. (up-down / in-out)
	Total Kg. 1,060 Removable counterweights Kg. 400 Removable battery Kg. 188		Mechanical parking brake on front wheels and negative drum brake to be activated by the steering helm on rear wheels
	24 V - 240 Ah 8 working hours		Fabricated from preformed and welded quality steel plate
	Front 4 polyurethanic 250x60 Rear 2 in polyurethanic 200x50 Mid wheels 2 in polyurethanic 200x50 with fixed support		+54°/-40°
	Rear Steering angle -90°/+90°		



## Load charts



## EU Standards CE

	UNI ISO 4301-2: A1
	2006/42 CE-2014/30 UE- 2000/14-4301 -1:A1 e and subsequent modifications
	EN 13000:2014 ANSI/ASME B30.5-2011 e and subsequent modifications



## Dimensions

