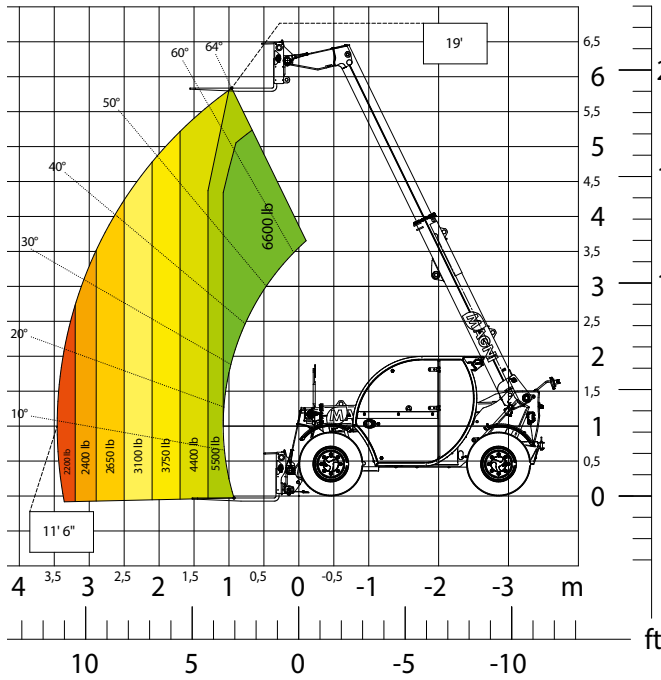


TH



3.6

PRELIMINARY



Load chart **on tyres**



CONSTRUCTION



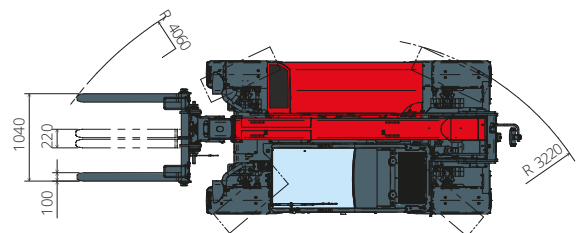
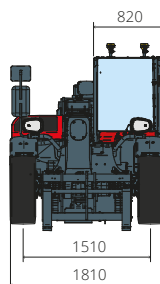
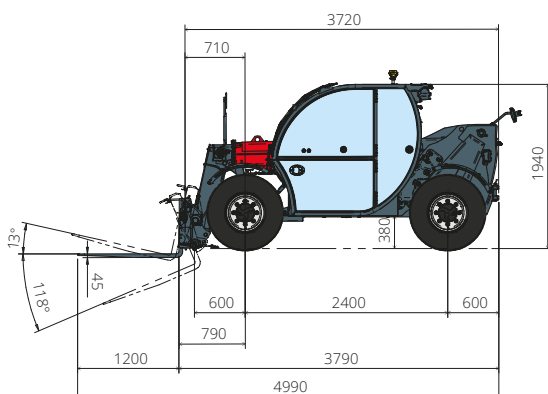
LOGISTICS



MINING



EVENTS
AND FILM



Machine model	Telescopic handler	TH 3.6
	Maximum lifting capacity	6,600 lb
	Maximum lifting height	19'
	Maximum reach	10'6"
Stabilizers	Type	-
Engine	Model	Deutz TCD 2,9 L4 EDG Stage IIIA
		Deutz TCD 2,9 L4 Stage V
	Rated power	55.4 kW (75.3 hp) at 2,600 rpm
	Maximum torque	192 lb/ft at 1,600 rpm
	Displacement	2.9 l
	Cylinders	4 in line
	Engine configuration	Turbocharged direct injection diesel
Transmission	Cooling system	Water
	Type	Hydrostatic
	Maximum pressure	500 bar
	Gear box	Direct drive 2 speed
Axles and brakes	Type	Axles with planetary gearboxes
	Front axle	Steering
	Rear axle	Free oscillation
	No. of steering wheels	4WD - 4WS
	Steering mode	Frontal/Concentric/Crab
	Service brake	Wet multi-disk on front axle
	Parking brake	Hydraulic with negative action on front axle
	Tyres dimensions	12.0/75 R18
Performance	Max. travel speed	21 mph
	Maximum mass towable on hook	6,850 lb
	Gradeability	51%
	Turning radius (end of forks)	13'4"
Weights	Total unladen*	10,700 lb
	Front axle unladen (boom retracted and lowered)*	2,000 lb
	Rear axle unladen (boom retracted and lowered)*	6,300 lb
Tank and system capacities	Fuel tank	17.2 U.S. gal
	AdBlue	-
	Hydraulic oil tank	22.4 U.S. gal
	Engine oil tank	2.4 U.S. gal
	Cooling liquid	4 U.S. gal
Hydraulic circuit for movements	Circuit type	Gear pump
	Service pump	Fixed displacement
	Max. hydraulic flow rate	87 l/min
	Max. boom head flow rate	75 l/min
	Max. operating system pressure	255 bar
	Controls for boom movements	Electro-proportional valve
	Movements control	1 joystick with integrated manoeuvre enable
Standard met	2006/42/EC: EU Machinery Directive	
	2016/1628: EU Regulation on the emissions of stage V engines	
	EN 1459-X: Relating to standards on the safety requirements for variable reach machines	
	EN 280-1/EN 280-2: standards relating to mobile elevating work platforms (if available)	
	ROPS/FOPS: relating to the standards for protective structures	

The data given in this brochure are provided for information purposes and are subject to change without prior notice.

All images are purely guideline and might not give an exact representation of the product.

*the stated weight refers to the vehicle unladen with standard equipment and may vary depending on the chosen configuration.