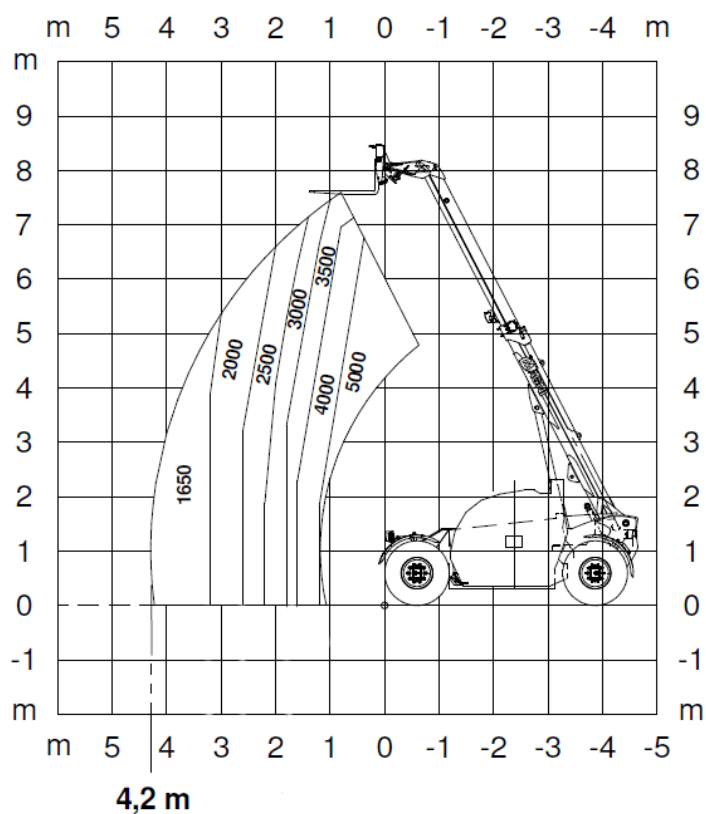
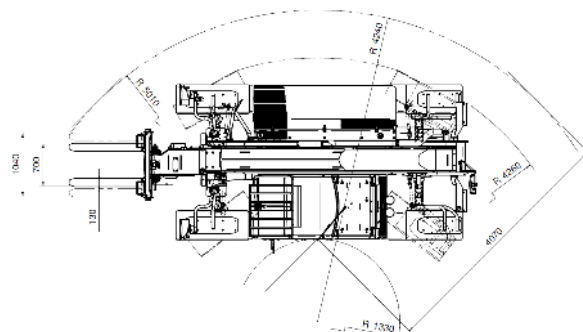
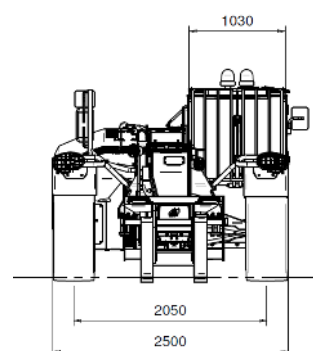
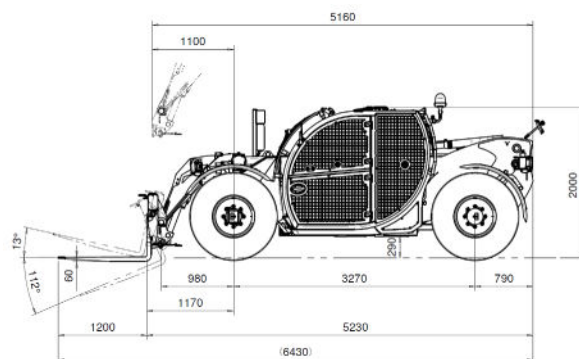


TH5.8

UNDERGROUND



LOAD CHART WITH FORKS

MACHINE MODEL	Telescopic handler	TH 5.8 UNDERGROUND
	Maximum lifting capacity	5,000 kg (center of gravity 600 mm)
	Maximum lifting height	7.60 m
	Maximum machine height	2.00 m
ENGINE	Type	Deutz TCD 3,6 L4 EDG
	Rated power	74,4 kW (97,7 hp) @ 2,200 rpm
	Maximum torque	410 Nm @ 1,600 rpm Dis-
	placement	3,6 l
	Cylinders	4 in line
	Engine configuration	Diesel direct injection turbocharged
	Cooling system	Water – intercooler
TRANSMISSION	Type	Hydrostatic
	Model	Bosch Rexroth
	Maximum pressure	470 bar
	Displacements	Electronically controlled variable displacement pump Variable displacement motor
	Gear box	Dropbox, 2 speeds
AXLES AND BRAKES	Axle type	Axles with planetary gearboxes
	Rear axle	Oscillating and steering with hydraulic locking +/- 7°
	Front axle	LS dynamic power steering
	Brake type	Mining fail-safe braking system
	Service brake	Hydraulic multi-disk power brake
	Service brake type	Dual acting master cylinder with independent lines to multi-disk brakes in oil bath on front & rear axles.
	Service brake control	Foot-operated for front & rear axles
	Parking brake /Emergency brake type	Spring applied hydraulic release (SAHR) on front & rear axles.
	Parking brake /Emergency brake control	Electro-hydraulic. Cabin switch. Fail-safe automatic application on engine shut-down.
	Tyres dimensions	16/70-24
	Operator test & warning	Warning: low brake pressure, residual service, brake pressure, loss of driver presence.
PERFORMANCE	Max. travel speed	35 km/h
	Drawbar pull	76 kN
	Gradeability	65%
	Turning radius (end of forks)	5,010 mm
WEIGHTS	Total unladen	8,600 kg
	Front axle unladen (boom retracted and lowered)	4,280 kg
	Rear axle unladen (boom retracted and lowered)	4,320 kg

TANK AND SYSTEM CAPACITIES	Fuel tank	120 l
	AdBlue	n.a.
	Hydraulic oil tank	90 l
	Engine oil tank	9 l
	Cooling liquid	20 l
HYDRAULIC CIRCUIT FOR MOVEMENTS	Max. operating system pressure	350 bar
	Circuit type	Load sensing
	Service pump	Bondioli & Pavesi – Variable displacement
	Controls for boom	Danfoss – SIL 2 electro-proportional valve
	Controls for stabilizers	Bosch Rexroth – Electro-hydraulic actuators
	Movements control	1 joystick Danfoss with FNR switch and dead man safety device - Management with CAN bus technology
CONTROL SYSTEMS & WARNINGS	Stability control	RCL Rated Capacity Limiter
GENERAL PROTECTIONS	Cabin	ROPS ISO:3471 - FOPS ISO: 3449 Level 1 and 2
	Body	Lights & cabin guards (on all cabin sides and under cabin roof) A/C condensor guard
	Exhaust	Catalytic Convertor/Purifier: 50 PPM
ERGONOMICS, ACCESS, VISIBILITY	Work lights	LED 2000 Lux (2x boom) LED 10000 Lux (1xfront 1xrear)
	Other	Fwd/rev directional lights (mounted on all the 4 cabin sides and on the 4 frame lights). Air conditioning
	Markings, Signs, Labelling	Warning & danger, controls & pre-op, reflective hi-visibility, access & maintenance point.
ISOLATION POINTS & MISCELLANEOUS	Emergency stops	Cabin x1 - External x2
	Isolation	Dual pole battery + starter isolators Fuel isolation valve Jump start receptacle, all inside engine bay
	Miscellaneous	Loose wheel nut indicators Easy Connect System – Attachment hydraulic hoses Wheel chocks x2 Boom cylinder lock
	Extinguisher(s)	external 2x6kg powder extinguishers
STANDARD MET	EN 1459-1: concerning standards for variable-reach trucks EN 13000: concerning standards for hydraulic cranes EN 280: concerning standards for mobile elevating work platforms FOPS/ROPS EU 2016/1628: concerning engine emissions standards ISO 3450-2011/1755/19296 ISO 5010: 1992 concerning emergency steering ANSI A92.20 ANSI B56.6	