

Data subject to change without prior notice  
Edition 10/2022 © 2022 JMG Cranes S.p.A. All rights reserved  
Rev. 2 - 10/22

## JMG Cranes S.p.A.

Sales & Service Office

Via Bergamo, 142

26100 Cremona - Italy

t +39 0372 1786738

Production Plant

Via Zuccherificio 2

29010 Sarmato (PC) - Italy

t +39 0523 8486

e info@jmgcranes.com



## Electric Pick & Carry Cranes



**MC 120 (metric)**  
Max Capacity 12,000 kg


[www.jmgcranes.com](http://www.jmgcranes.com)

**JMG**<sup>®</sup>  
movetosolution


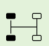







TELESCOPIC BOOM  
FRONT-WHEELS DRIVE WITH COUNTER ROTATION  
REMOVABLE COUNTERWEIGHTS



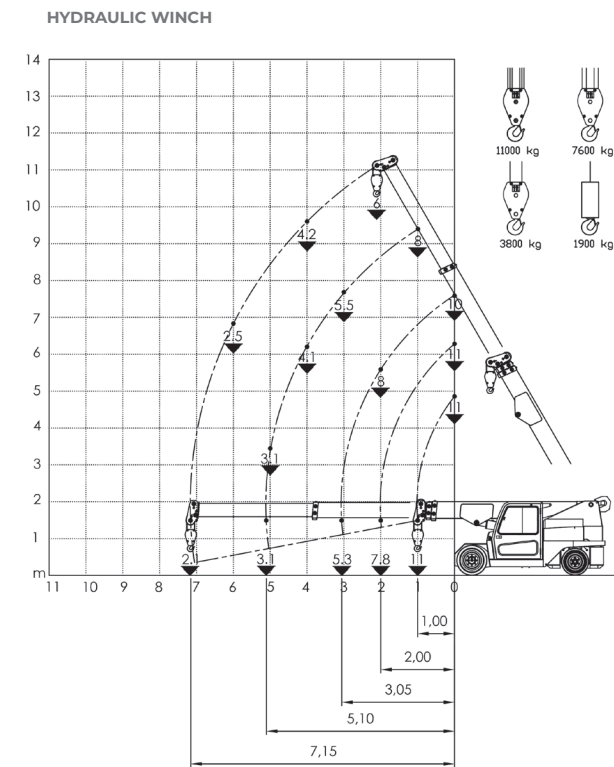
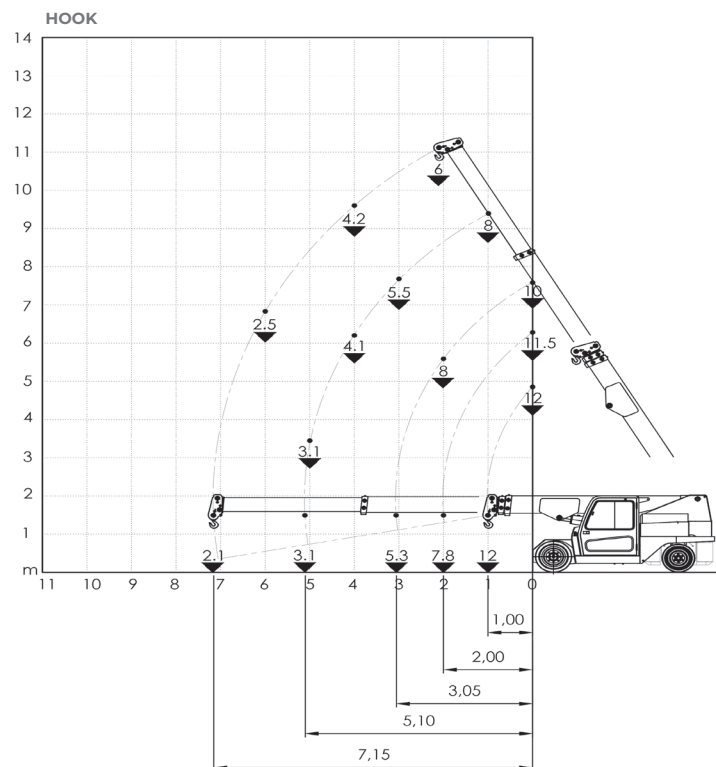
### Options :

- HYDRAULIC WINCH
- HYDRAULIC JIB
- HYDRAULIC EXTENSION
- MANUAL JIB
- MANUAL EXTENSION
- NON-MARKING TIRES
- RADIO REMOTE CONTROL
- HYDRAULIC FORKS
- MAN BASKET
-  ATEX CONVERSIONS
- CUSTOMIZED PAINTING




## Technical features

Max. Capacity kg	 12,000	 Front-wheels drive. 2 electric motors AC 7,5 kW 80V Insulation class H	<b>LMI.</b> Electronic safe load indicator and tilting moment limiter
	Dimension mm	 4020x1950x2000	
			 80 V - 920 Ah 8 working hours
		 Front nr. 4 superelastic 300-15" Rear nr. 2 superelastic 250-15"	 Fabricated from preformed and welded quality steel plate
		 Rear Steering angle -90°/+90°	 +60°/-10°
			 Motor driven pump 1x16 kW-80 V AC

## Load charts



## EU Standards CE

	UNI ISO 4301-1: A1
	2006/42 CE-2014/30 UE-2014/35 UE- 2000/14 and subsequent modifications
	EN 13000:2014 ANSI/ASME B30.5-2011 and subsequent modifications

## Dimensions

